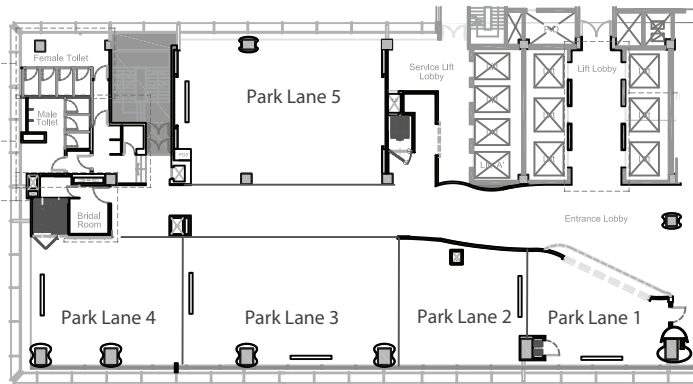




THE PARK LANE  
HONG KONG

## 27F PARK LANE ROOMS SET-UP

### ROUND TABLE



Victoria Park & Harbour View

#### Function Rooms

Ceiling Height:  
3m / 10ft

Park Lane Room  
Total Size: 356m<sup>2</sup> / 3838ft<sup>2</sup>

Park Lane 1: 43m<sup>2</sup> / 462ft<sup>2</sup>

Park Lane 2: 52m<sup>2</sup> / 559ft<sup>2</sup>

Park Lane 3: 91m<sup>2</sup> / 979ft<sup>2</sup>

Park Lane 4: 64m<sup>2</sup> / 688ft<sup>2</sup>

Park Lane 5: 106m<sup>2</sup> / 1150ft<sup>2</sup>

#### Round Table Style SET-UP

Function Room

Seating Capacity:

Park Lane 1:

24

Park Lane 2:

36

Park Lane 3:

72

Park Lane 4:

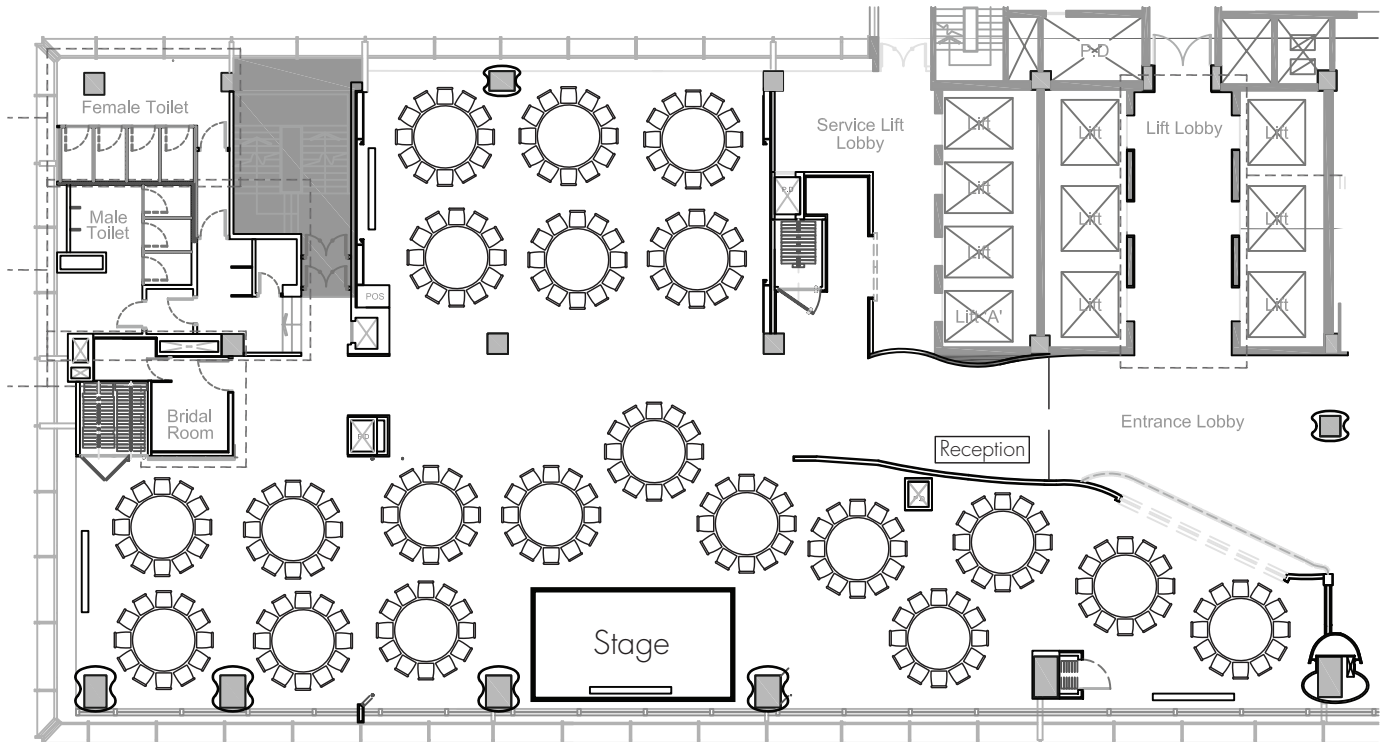
48

Park Lane 5:

72

Park Lane Room:

240



Victoria Park & Harbour View

310 Gloucester Road, Causeway Bay, Hong Kong  
Tel: (852) 2293 8888 | Fax: (852) 2576 7853