



THE PARK LANE
HONG KONG

AUTOGRAPH COLLECTION®
HOTELS

MEETINGS AND EVENTS



Meetings Beyond Expectations

The Park Lane Hong Kong presents a range of versatile event spaces spanning over 1,000 square meters, comprising 15 function rooms, and 350 square meters of outdoor space.

Situated on high floors, these spaces are bathed in natural daylight, creating a serene atmosphere. Our team of seasoned professionals attends to each detail, guaranteeing a flawless and exceptional event experience.

[Experience venue virtual tour >](#)

Canvas

Resembling a blank canvas, Canvas on the 26th floor is a versatile function venue where you can bring your creative ideas to life. With the ability to transform into seven function spaces equipped with state-of-the-art equipment and stylish designs, Canvas is perfect setting for corporate events, seminar, workshops, meetings and banquets.







Park Lane Room

Located on the 27th floor of the Park Lane Hong Kong, Park Lane Room has a ceiling height of 3M/9.8ft and a seating capacity of 240. The venue can be converted into five separate meeting rooms with seating capacity ranging from 24 to 72 with views overlooking Victoria Park or the city.







Harbour & Windsor

On the 28th floor of The Park Lane Hong Kong, discover Harbour & Windsor, a venue with a seating capacity of 132, this space can be segmented into three event spaces: Harbour East, Harbour West, and Windsor, offering tailored settings for corporate functions and meetings.

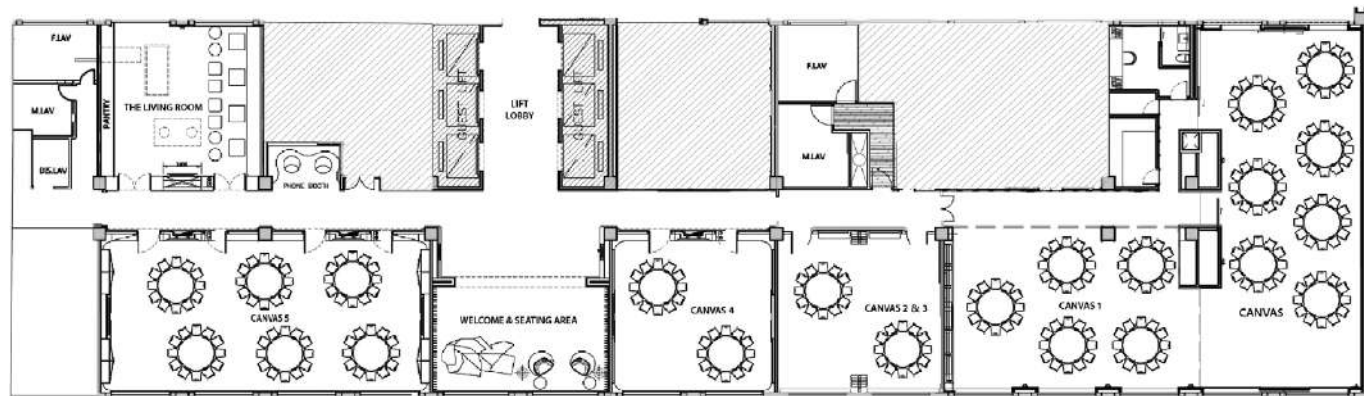




Rooftop Garden

On the 28th floor, the hotel features an exquisite Rooftop Garden, offering a sophisticated alfresco terrace with unparalleled views of Victoria Park, Victoria Harbour and the towering skyscrapers of Kowloon.



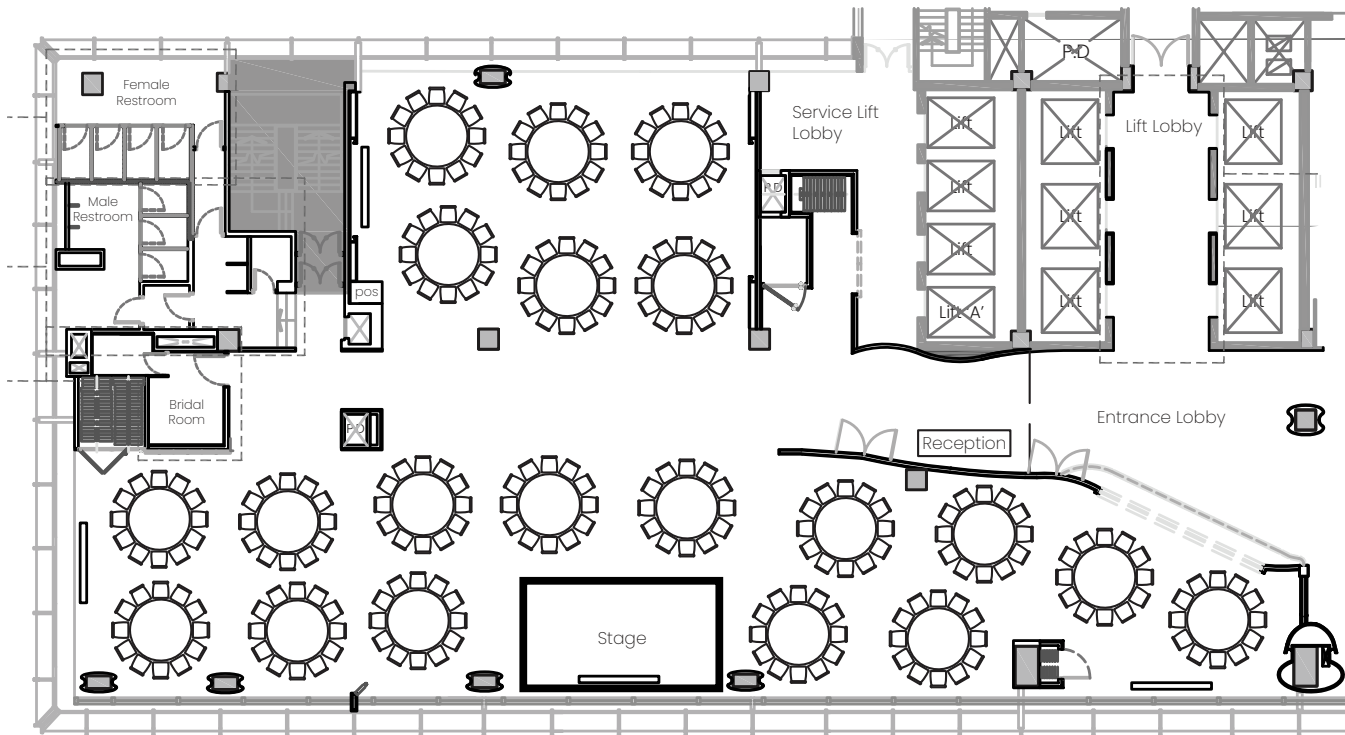


Victoria Park

Victoria Harbour

CANVAS - LEVEL 26

	Ceiling Height 8.2ft / 2.5m	Area ft ² / m ²	Seating Capacity
CANVAS		1453 / 135	84
CANVAS + 1		2443 / 227	144
CANVAS 1		990 / 92	60
CANVAS 2		323 / 30	12
CANVAS 3		323 / 30	12
CANVAS 2 + 3		645 / 60	24
CANVAS 4		592 / 55	24
CANVAS 5		1206 / 112	72

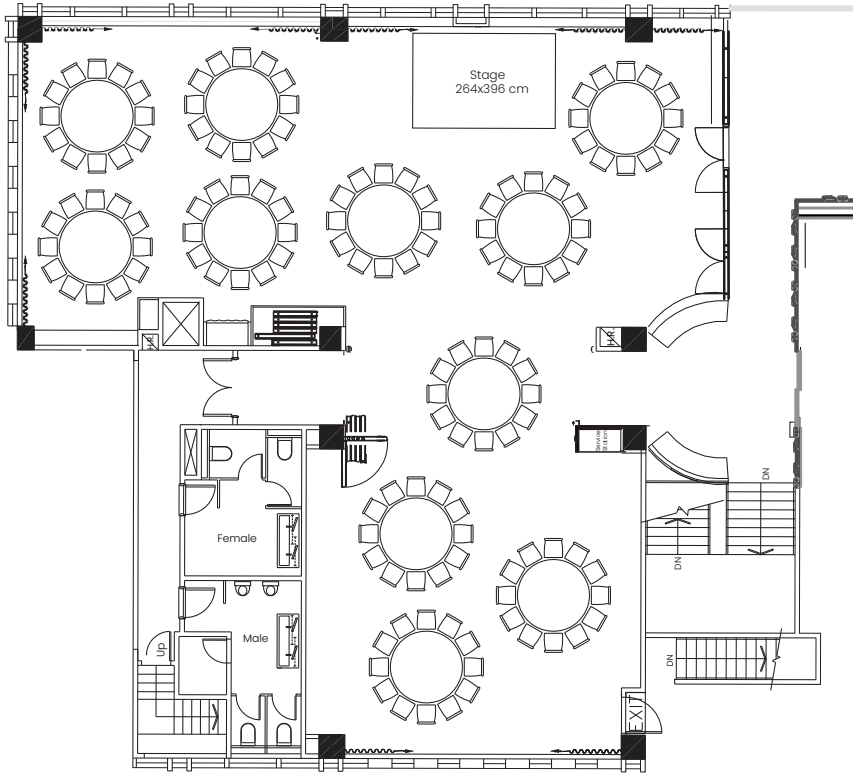


Victoria Park

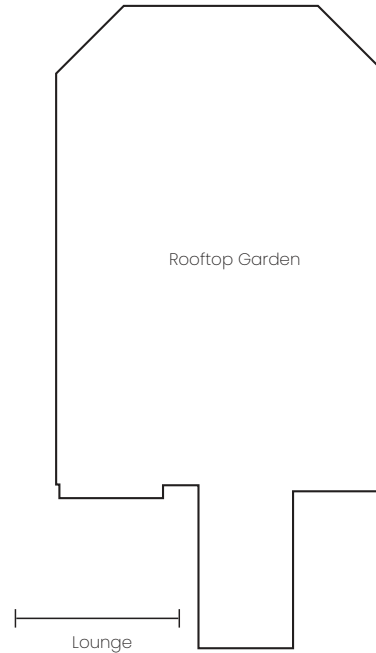
PARK LANE ROOM - LEVEL 27

Ceiling Height 9.8ft / 3m	Area ft ² / m ²	Seating Capacity	
	PARK LANE 1	463 / 43	24
	PARK LANE 2	560 / 52	36
	PARK LANE 3	980 / 91	72
	PARK LANE 4	689 / 64	36
	PARK LANE 5	968 / 90	72
	PARK LANE ROOM	3660 / 340	240

Victoria Harbour










Victoria Harbour



HARBOUR & WINDSOR AND ROOFTOP GARDEN - LEVEL 28

	Ceiling Height 9.2ft / 2.8m	Area ft ² / m ²	Seating Capacity
HARBOUR EAST		893 / 83	48
HARBOUR WEST		668 / 62	36
WINDSOR		743 / 69	36
HARBOUR WEST & EAST		1550 / 144	96
HARBOUR & WINDSOR		2303 / 214	132
ROOFTOP GARDEN		3767 / 350	-

MEETING ROOM	AREA (FT ² /M ²)	HEIGHT (FT/M)	 THEATRE	 U-SHAPE	 CLASSROOM	 OBLONG	 COCKTAIL	 BANQUET	 CABARET
Canvas	1453 / 135	7.2 / 2.3	120	36	54	36	100	84	56
Canvas 1	990 / 92	7.4 / 2.25	60	24	36	24	50	60	40
Canvas & Canvas 1	2443 / 227	7.4 / 2.25	180	-	90	-	150	144	96
Canvas 2	323 / 30	7.2 / 2.2	20	9	9	12	20	12	8
Canvas 3	323 / 30	7.2 / 2.2	20	9	9	12	20	12	8
Canvas 2 & Canvas 3	645 / 60	7.2 / 2.2	40	18	18	18	30	24	16
Canvas 4	592 / 55	7.4 / 2.25	40	18	18	18	30	24	16
Canvas 5	1206 / 112	7.4 / 2.25	80	30	54	36	80	72	48
The Living Room	613 / 57	8.2 / 2.5	40	18	18	18	30	30	24
Park Lane 1	463 / 43	9.8 / 3	25	12	15	12	30	24	16
Park Lane 2	560 / 52	9.8 / 3	30	15	18	12	40	36	24
Park Lane 3	980 / 91	9.8 / 3	75	33	54	30	80	72	48
Park Lane 4	689 / 64	9.8 / 3	45	18	27	12	50	36	32
Park Lane 5	968 / 90	9.8 / 3	65	36	45	30	80	72	48
Park Lane Room	3660 / 340	9.8 / 3	311	-	102	-	400	240	160
Harbour West	668 / 62	9.2 / 2.8	50	18	27	12	40	36	24
Harbour East	893 / 83	9.2 / 2.8	70	24	36	18	50	48	32
Harbour West & East	1550 / 144	9.2 / 2.8	120	42	72	36	100	96	64
Windsor	743 / 69	9.2 / 2.8	50	18	36	12	40	36	24
Harbour & Windsor	2303 / 214	9.2 / 2.8	170	42	72	36	150	132	88
Rooftop Garden	3767 / 350	-	-	-	-	-	150	-	-
Harbour & Windsor and Rooftop Garden	6490 / 603	-	-	-	-	-	250	-	-



THE PARK LANE HONG KONG AUTOGRAPH COLLECTION
310 Gloucester Road, Causeway Bay, Hong Kong, China
T +852 2293 8888 - D +852 2839 3330 - F +852 2839 3330
E info@parklane.com.hk

For events enquiries, please contact
D +852 2839 3332 - F +852 2881 1752
E events@parklane.com.hk

www.parklane.com.hk | autograph-hotels.marriott.com/



@The Park Lane Hong Kong



@theparklanehongkong